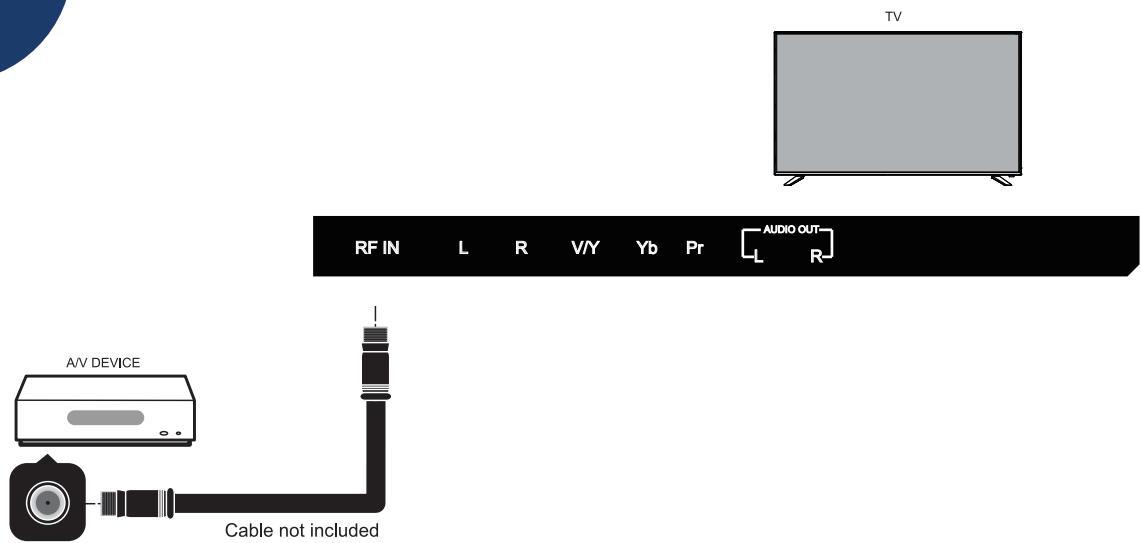
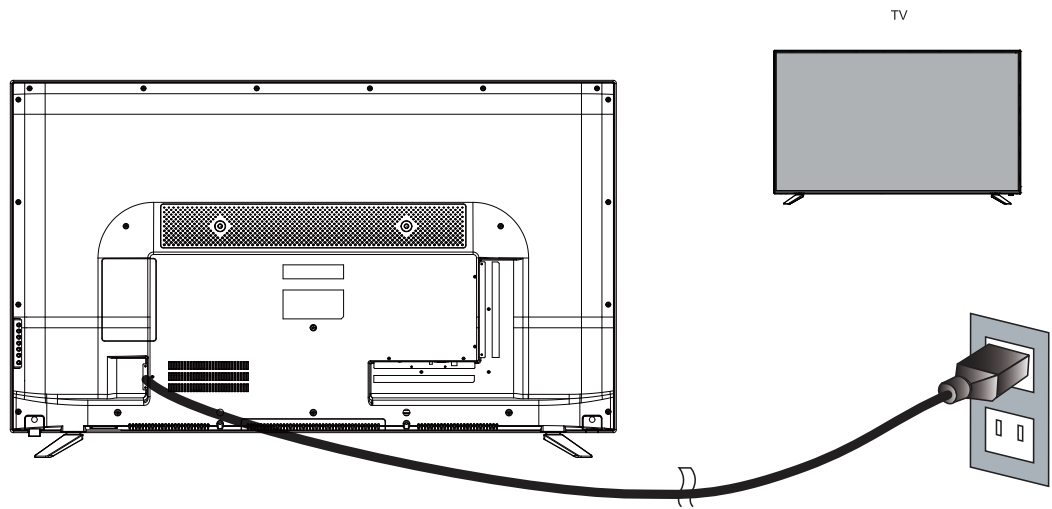


Basic
Connection

Coaxial / RF Cable / Antenna



Connect Power Cord



Press the **POWER** button on the remote control to turn on the TV

QUICK START GUIDE



Simple Steps for Connecting
your TV to A/V Devices



IMPORTANT NOTE:

During setup, do NOT run the “Channel Auto Scan” function if your TV is connected to a Cable or Satellite set top box.

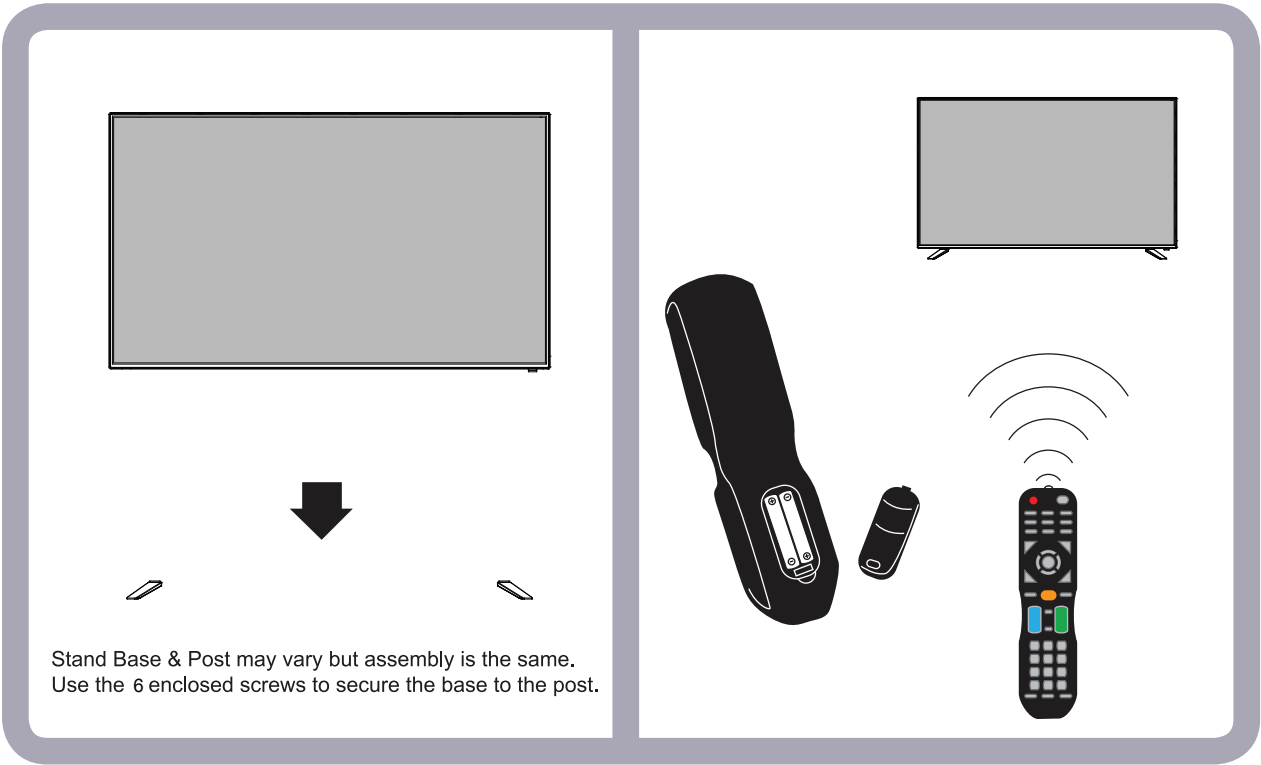
For technical support, the VIDAO Technical Support Center is available 10:00AM to 7:00PM (Monday to Saturday) for technical assistance or troubleshooting. To contact us please call 1-855-998-4326, or visit www.sibrandssupport.com

A/V Devices Include:

- Blu-ray® Disc Players
- DVD Players
- Cable, Satellite, or Set-Top Boxes
- VCRs
- Game Consoles

If you need additional
help, please consult
your user manual.

Insert the TV into the base and securely attach.
Install the batteries in the Remote Control

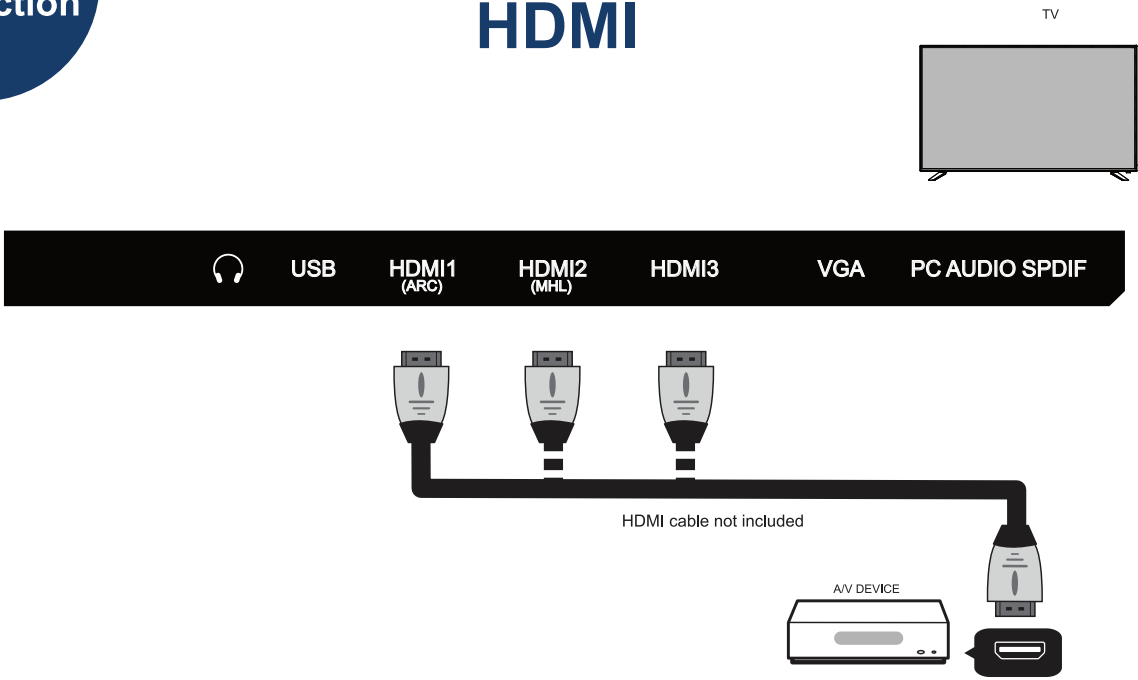


To operate this TV using the remote control provided by your Cable / Satellite provider, follow the programming instructions included with the providers' remote control and input the following codes when prompted;

- For Comcast or DirecTV remote controls, input the code- 10030.
- For AT&T (U-verse) remote Controls, input the code- 1043.
- For RCA Universal Remote Controls, input the code- 0030.
- For Dish Network remote controls, input the code- 506.

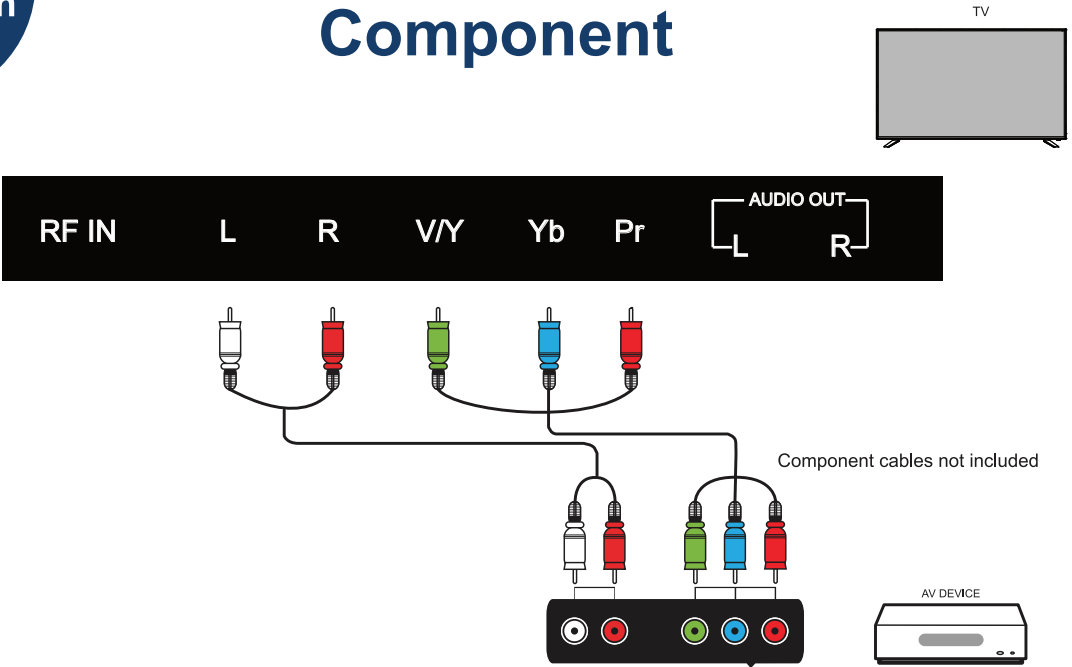
Best Connection

HDMI



Better Connection

Component



For technical support, the VIDAQ Technical Support Center is available 10:00AM to 7:00PM (Monday to Saturday) for technical assistance or troubleshooting.
To contact us please call 1-855-998-4326, or visit www.sibrandssupport.com

Good Connection

Composite

