

Supports VESA Sizes up to: 600x400

Maximum Weight Capacity:

Mount: 120 Lbs

Top Shelf: 100 Lbs

Middle Shelf: 40 Lbs

Bottom Shelf: 50 Lbs



MODEL E6032S

ASSEMBLY INSTRUCTIONS

Important! Read all warnings before starting assembly.

**For technical assistance or troubleshooting please
call 1-855-994-3832 or visit www.sibrandssupport.com**

READ THIS FIRST!

Read all of the warnings and cautions contained in this manual before assembly.

- Do not attempt to assemble this product if you do not understand the instructions.
- Contact a professional if you have any doubts about safe and secure TV furniture assembly.
- Check all the parts carefully to make sure there are no missing or damaged parts.
- Improper assembly may result in damage to your TV, property, and personal injury.
- This product is intended only to support a television of the indicated size and weight combination. Using this product to support televisions heavier than the maximum weight capacity can damage product and cause personal injury.
- Schoenfeld International Inc. and ETEC are not responsible for any personal injury or product damage due to mishandling, incorrect mounting, incorrect assembly or incorrect use of this product.

CHILD SAFETY WARNINGS

How and where you use your television stand is extremely important for Child Safety

As you set up and use your new product, keep all of these safety tips in mind

- ! Don't let children climb on or play with entertainment system furniture and TVs.
- ! Remember that children can become excited while watching a program, especially on a "larger than life" TV. Make sure to place or install the TV stand where it cannot be pushed, pulled over, or knocked down.
- ! Make sure that you route all cords and cables so that they cannot be pulled or grabbed by curious children.

WARNINGS

- This product is intended only to mount a television of the indicated size and weight combination. Using this product to support televisions or other products heavier than the maximum weight capacity can damage equipment and cause personal injury.
- Schoenfeld International Inc. and ETEC are not responsible for any personal injury or product damage due to mishandling, incorrect mounting, incorrect assembly or incorrect use of this product.
- Do not force the bolts into the hole or use an electric drill to fasten any bolts. This could damage the equipment or cause personal injury.
- A large television requires two people to lift. Schoenfeld International and ETEC are not responsible for equipment damage or personal injury due to mishandling.
- Do not release the TV until you are sure that it is securely mounted. Releasing the TV without first ensuring that it is securely installed can result in equipment damage or personal injury.

CAUTION:

- Do not place the TV face down on a hard surface when installing the mounting plate on the TV. Placing the TV face down on a hard surface can result in equipment damage. Use a blanket or other suitable surface.
- Check with your TV manual or manufacturer to confirm the required bolt diameter according to the size, depth, and position of the mounting holes in your TV.

FOR YOUR SAFETY, PLEASE FOLLOW THESE PRECAUTIONS:

Always remove the TV and other equipment from the furniture prior to moving the assembled unit.

- ! Be careful when moving the assembled furniture after the glass shelf has been installed, or when there is equipment of any kind located on the furniture as this may cause the shelves and other parts to become unstable and fall.
- ! When in use, this furniture must be placed on a flat, level and solid surface.
- ! Do not lean on or place any force on the TV when it is on the TV stand.
- ! Do not climb or step on the stand

- ! Do not bang into or place your own weight on the glass shelves
- ! Do not place any items on the shelves or mounts which may exceed the maximum weight limits.
- ! Always place the heaviest component (except for your TV) on the bottom shelf

Schoenfeld International Inc. and ETEC will not be responsible for failure to assemble as directed or for the improper assembly, use or handling of this stand

VEILLER Á RESPECTER CES MESURES DE PRECAUTION!

TOUJOURS ENLEVER LE TÉLÉVISEUR ET AUTRE ÉQUIPEMENT AVANT DE DÉPLACER LE MEUBLE ASSEMBLÉ.

- ! DÉPLACER LE MEUBLE AVEC PRÉCAUTION UNE FOIS QUE LE PLATEAU EN VERRE A ÉTÉ POSÉ OU LORSQU'IL Y A DU MATERIEL PLACÉ SUR LE MEUBLE CAR CELA PEUT CAUSER LE DÉCROCHEMENT ET LA CHUTE DES PLATEAUX ET AUTRES ÉLÉMENTS.
- ! DURANT L'UTILISATION, LE MEUBLE DOIT ÊTRE POSÉ SUR UNE SURFACE PLATE, SOLIDE ET HORIZONTALE.
- ! NE PAS S'APPUYER CONTRE LE TÉLÉVISEUR LORSQU'IL EST POSÉ SUR LE MEUBLE.
- ! NE PAS GRIMPER NI MARCHER SUR LE MEUBLE.
- ! NE PAS TAPER NI S'APPUYER SUR LE PLATEAU EN VERRE

Schoenfeld International Inc. y ETEC decline toute responsabilité en cas d'assemblage non conforme aux instructions ou pour l'assemblage, l'utilisation ou la manutention incorrects de ce meuble.

POR SU SEGURIDAD TENGA LAS SIGUIENTES PRECAUCIONES:

- ! SIEMPRE quite el televisor y cualquier otro equipo del mueble antes de mover la unidad armada.
- ! TENGA CUIDADO AL MOVER LA UNIDAD ARMADA UNA VEZ INSTALADO EL ESTANTE DE VIDRIO Y/O CUANDO HAYA ALGUN EQUIPO EN EL MUEBLE YA QUE ESTO PODRÍA AFLOJAR EL ESTANTE Y OTROS ARTÍCULOS Y HACER QUE SE CAIGAN.
- ! EL MUEBLE DEBE ESTAR UBICADO EN UNA SUPERFICIE PLANA, SÓLIDA Y NIVELADA CUANDO SE LO ESTE UTILIZANDO.
- ! NO INCLINE EL TELEVISOR CUANDO ESTE EN EL SOPORTE PARA TV.
- ! NO SE SUBA NI SE PARE SOBRE EL SÓPORTE.
- ! NO GOLPEE EL ESTANTE DE VIDRIO NI SE APOYE CON SU PESO SOBRE EL MISMO

Schoenfeld International Inc. y ETEC no se hará responsable en caso de que no se instale la base según las instrucciones, ni de la instalación, uso o manejo incorrectos de esta base.



LIMITED SIX-YEAR FURNITURE WARRANTY

We warrant this product to you, the original purchaser at the time of purchase printed on a dated store receipt from an authorized ETEC retailer and for a period of six-years thereafter that our furniture product and all its parts and components are free of defects in material and workmanship under normal use. This warranty is subject to the provisions below. ETEC's sole obligation and the purchaser's exclusive remedy pursuant to these warranties are limited to replacement at ETEC's sole discretion. There are no other warranties except as expressly set forth below either expressed or implied, including any warranty of merchantability for any particular purpose.

Should you be missing any of the assembly parts or components (screws, pieces, etc.), please contact the Technical Support Center to secure a replacement for those parts. It is not necessary to bring the entire unit back to the store. When calling, please use the parts list found in the Instruction Manual to help us accurately identify the missing parts so we can promptly provide replacements.

Our Customer Support Center is available Monday - Saturday (10:00AM to 7:00PM EST) for technical assistance or troubleshooting. To contact us, please call 1-855-994-3832 or visit www.sibrandssupport.com.

This warranty is expressly limited to the replacement of furniture parts and components described in the parts list located in the Instruction Manual included with the product.

This warranty applies under conditions of normal use.

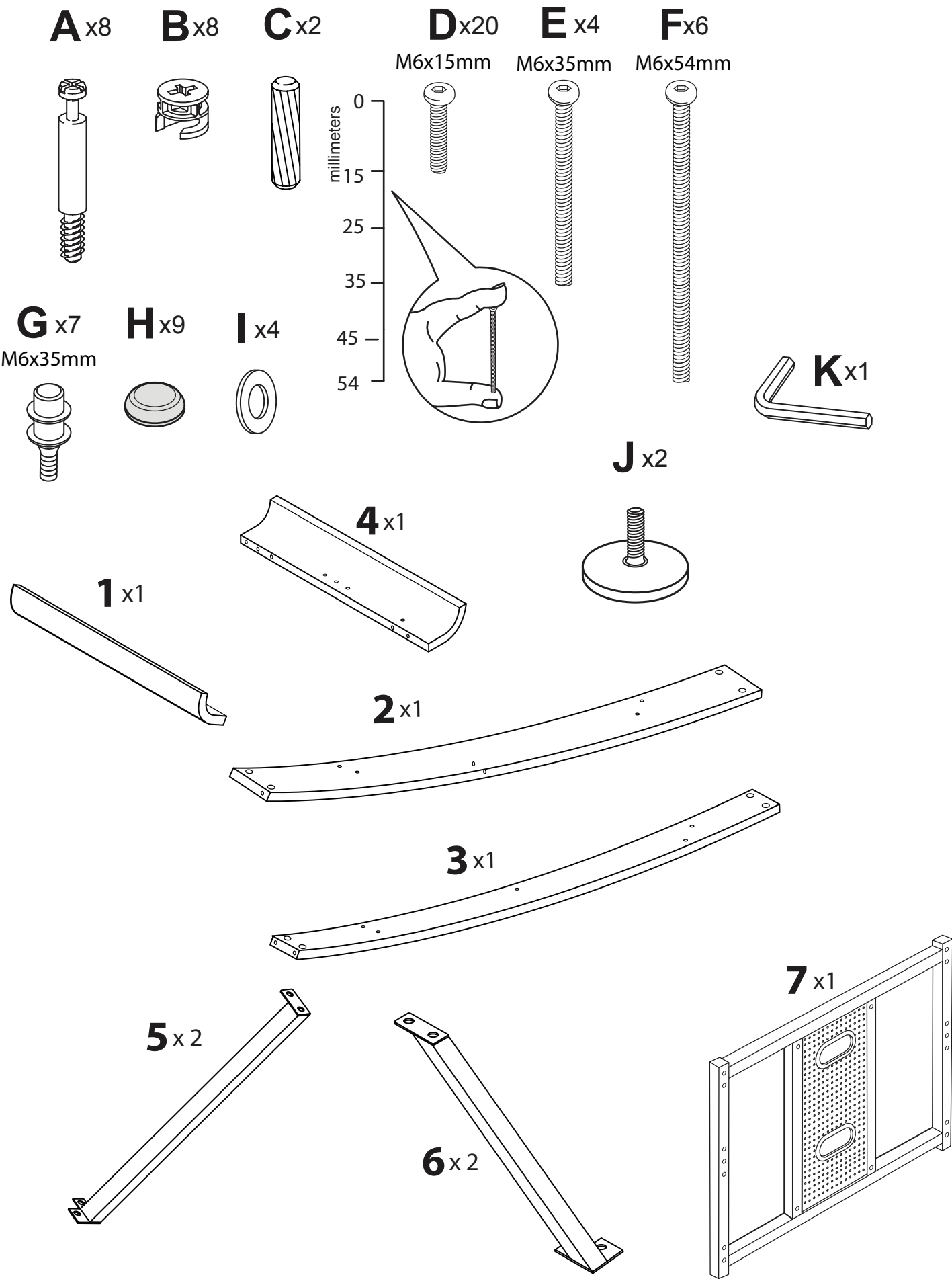
This warranty does not cover: any product, which has been subject to damage due to improper assembly or disassembly, products which were not assembled, installed, used, or maintained in accordance with the product assembly instructions & warnings, acts of nature, misuse, neglect, accidents, abuse, exposure to elements, outdoor use, extreme temperature ranges, damage during transit, commercial use, modification of, or to any part of the product or attachments to the product not approved by ETEC. Also not covered are costs for assembly/dis-assembly labor, costs incurred in shipping the unit or parts for warranty repair/exchange or any products purchased from unauthorized ETEC sellers. Under no circumstances shall ETEC, be liable for any loss (direct, indirect, incidental, foreseen, unforeseen, special or consequential) or for any damage arising out of, or in connection with, the use of this product. Nor shall ETEC have any responsibility for incidental or consequential damages resulting from the breach of this warranty including but not limited to inconvenience, purchase or rental of replacement products, loss of profits or commercial loss.

We reserve the right to request damaged parts or units be shipped to our offices for inspection or confirmation of any warranty claims.

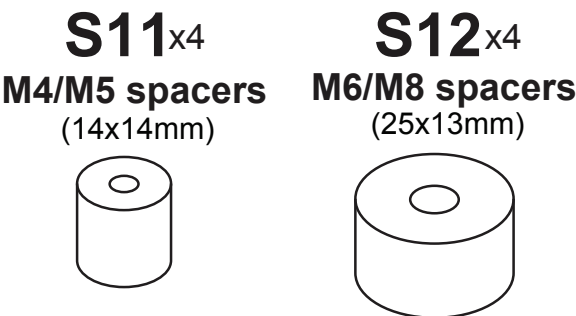
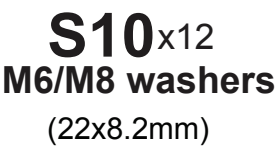
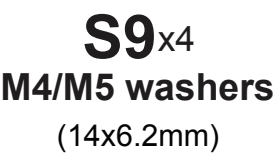
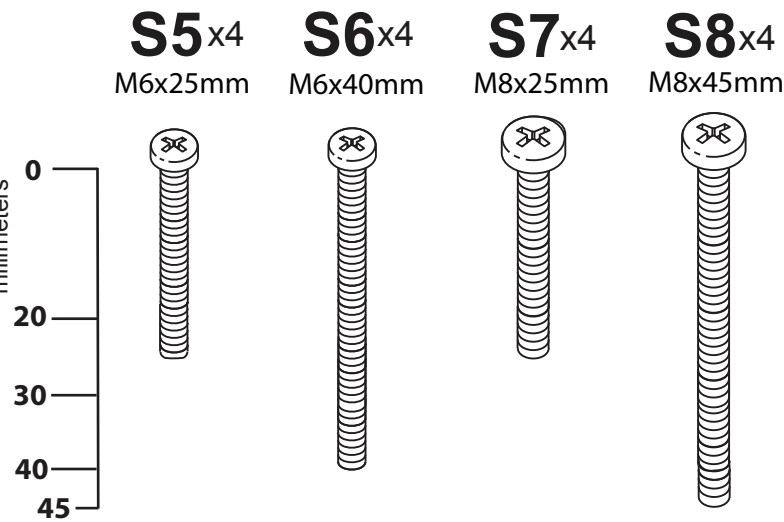
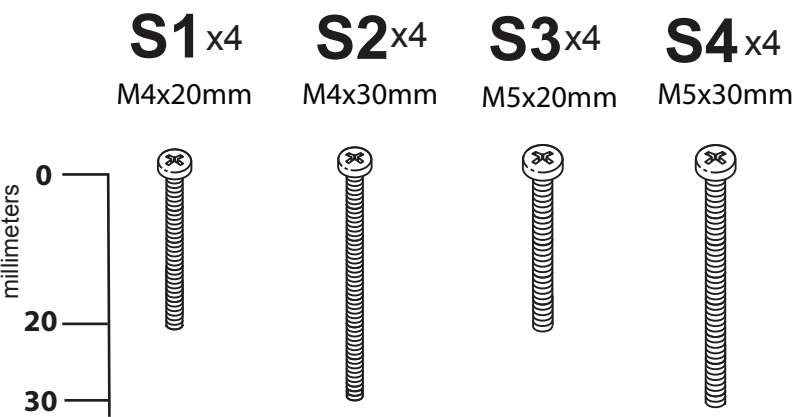
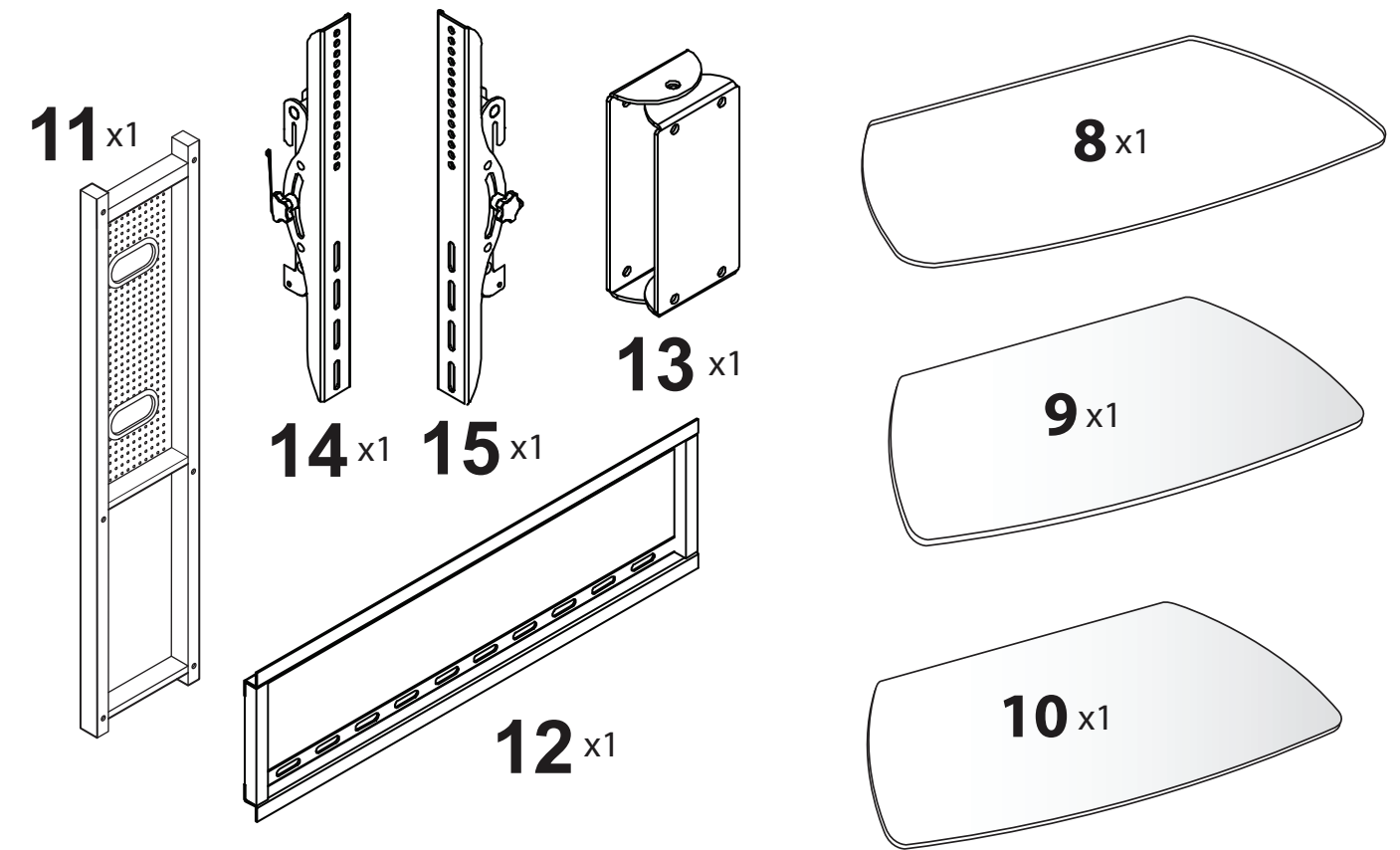
This warranty does not cover product sold 'As Is'.

This warranty is valid only to the original purchaser of the Product in the United States and Canada and grants specific legal rights.

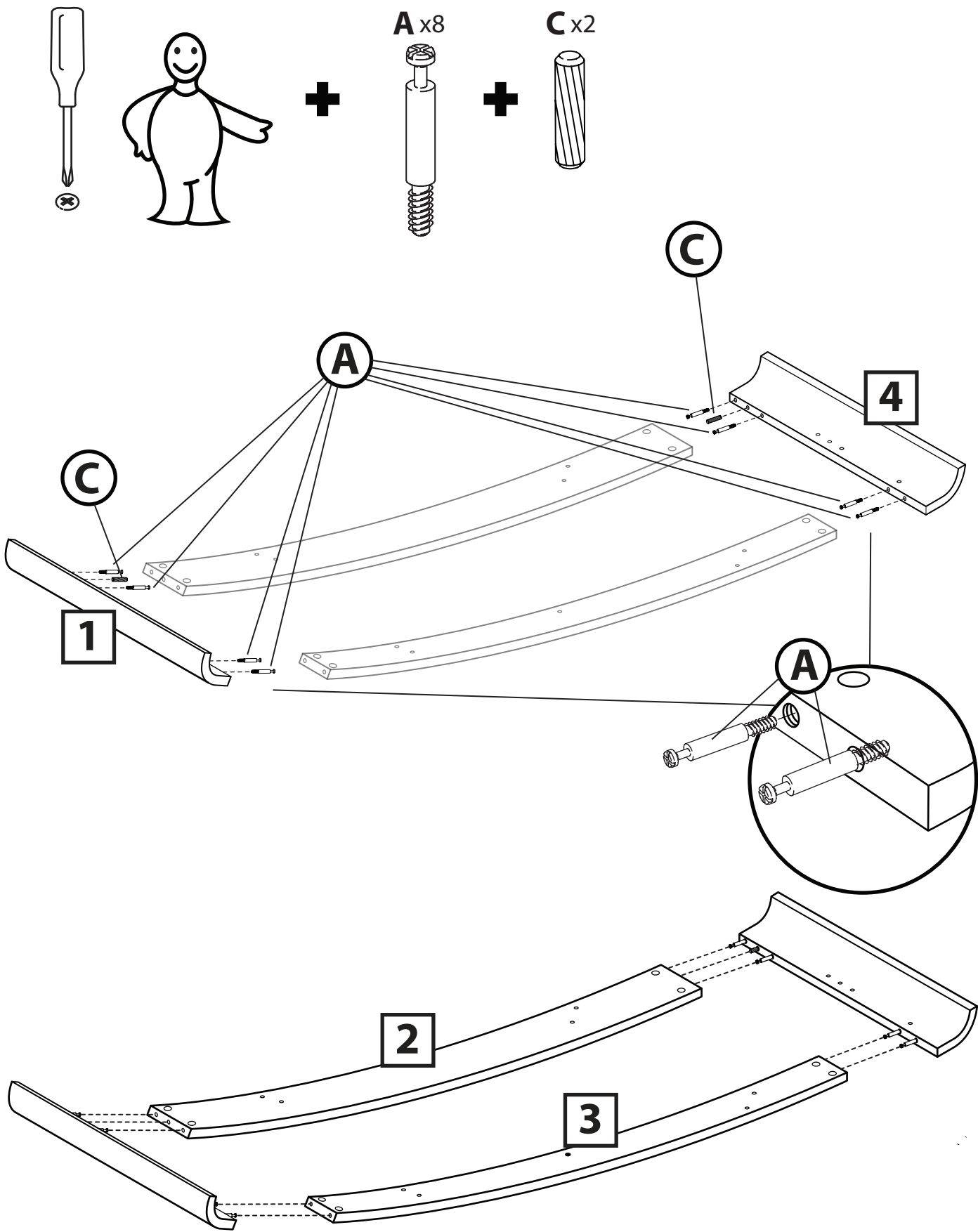
PARTS



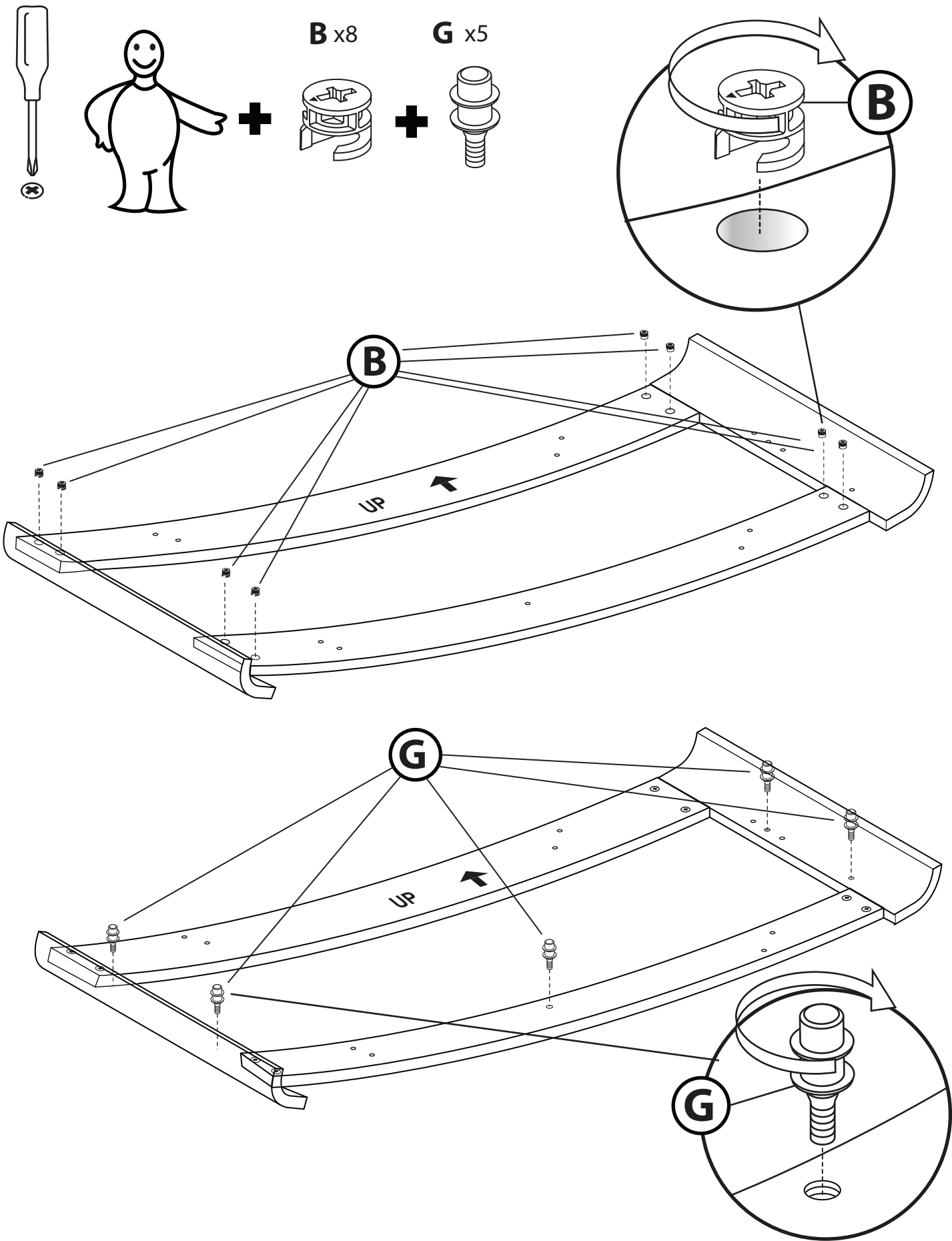
PARTS

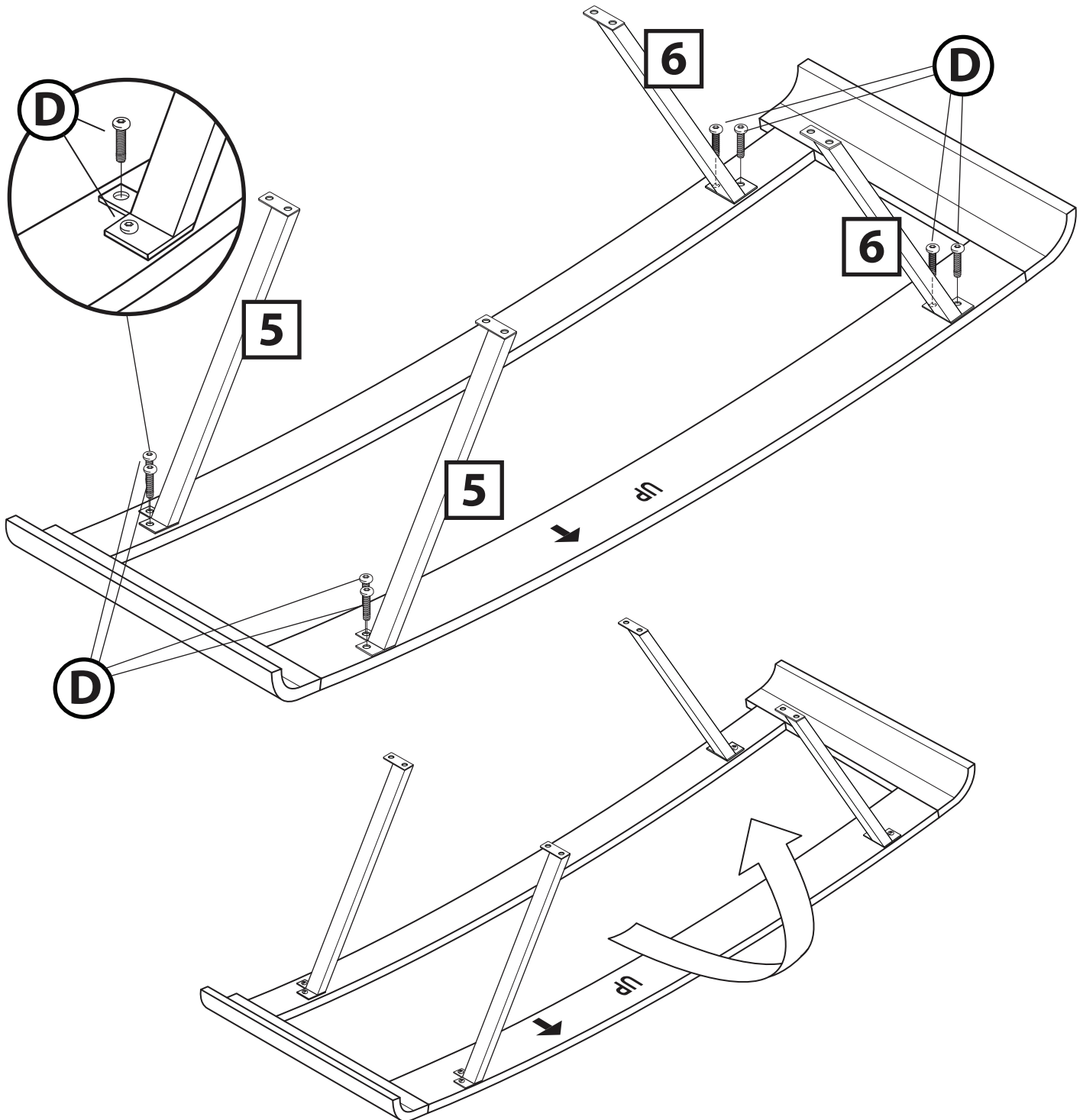
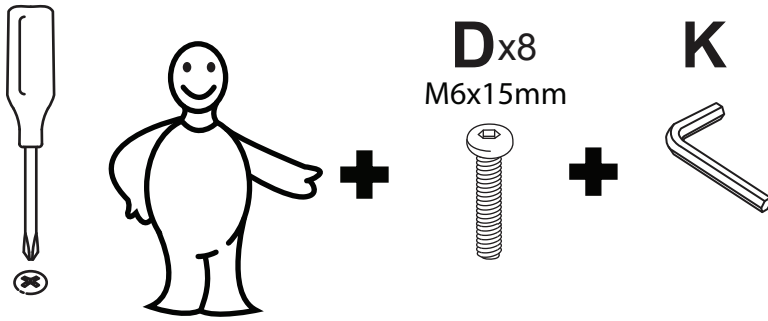


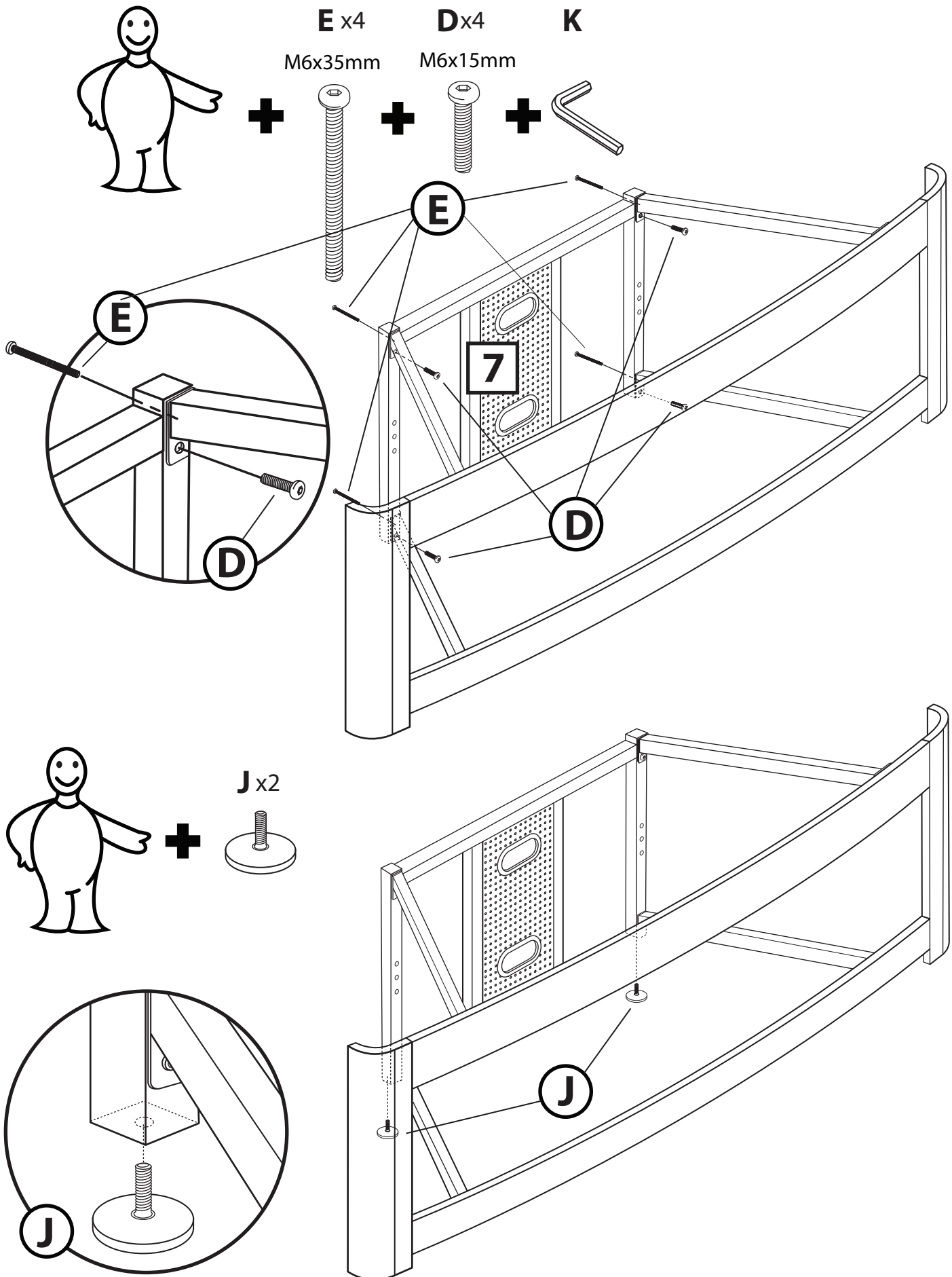
STEP 1

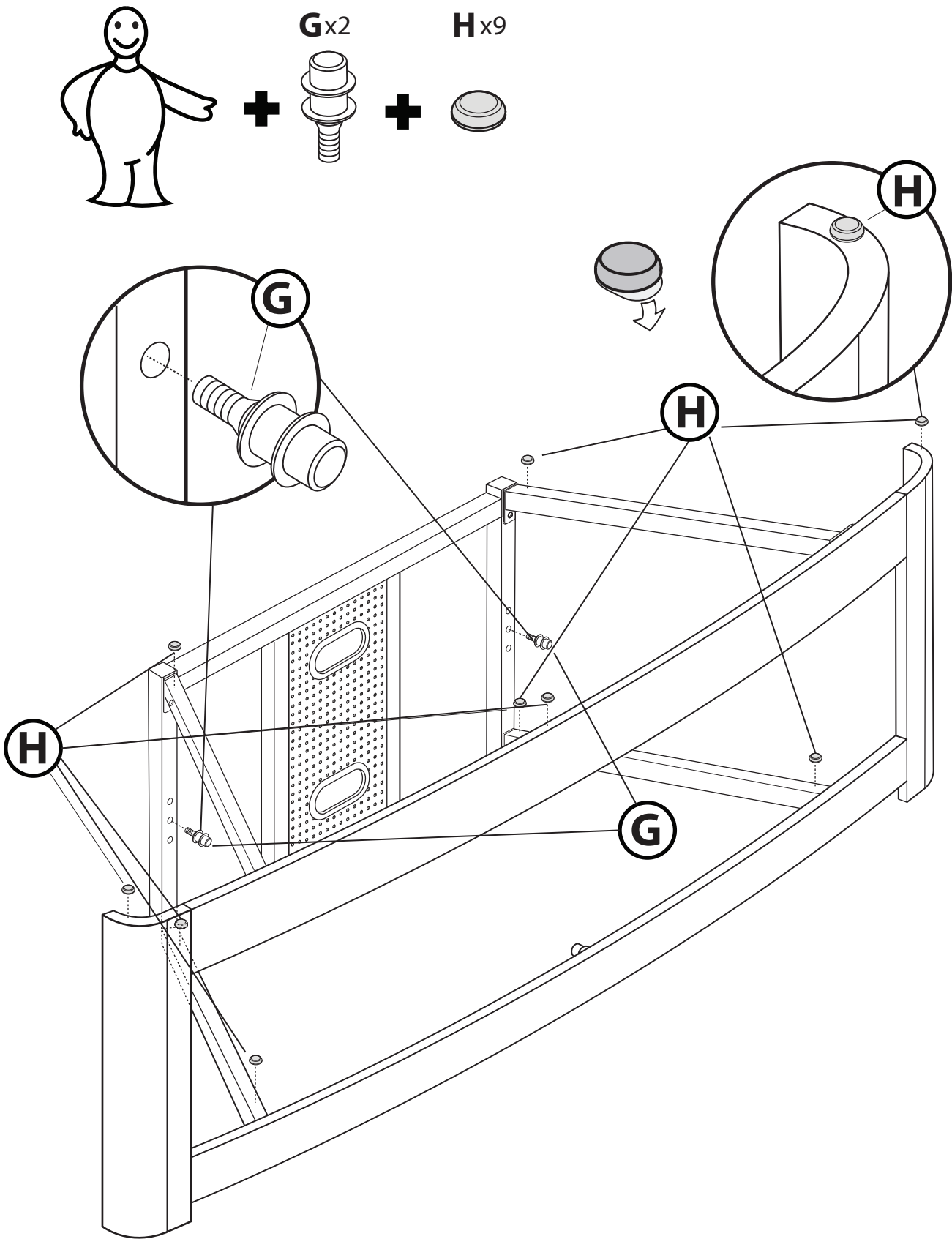


STEP 2



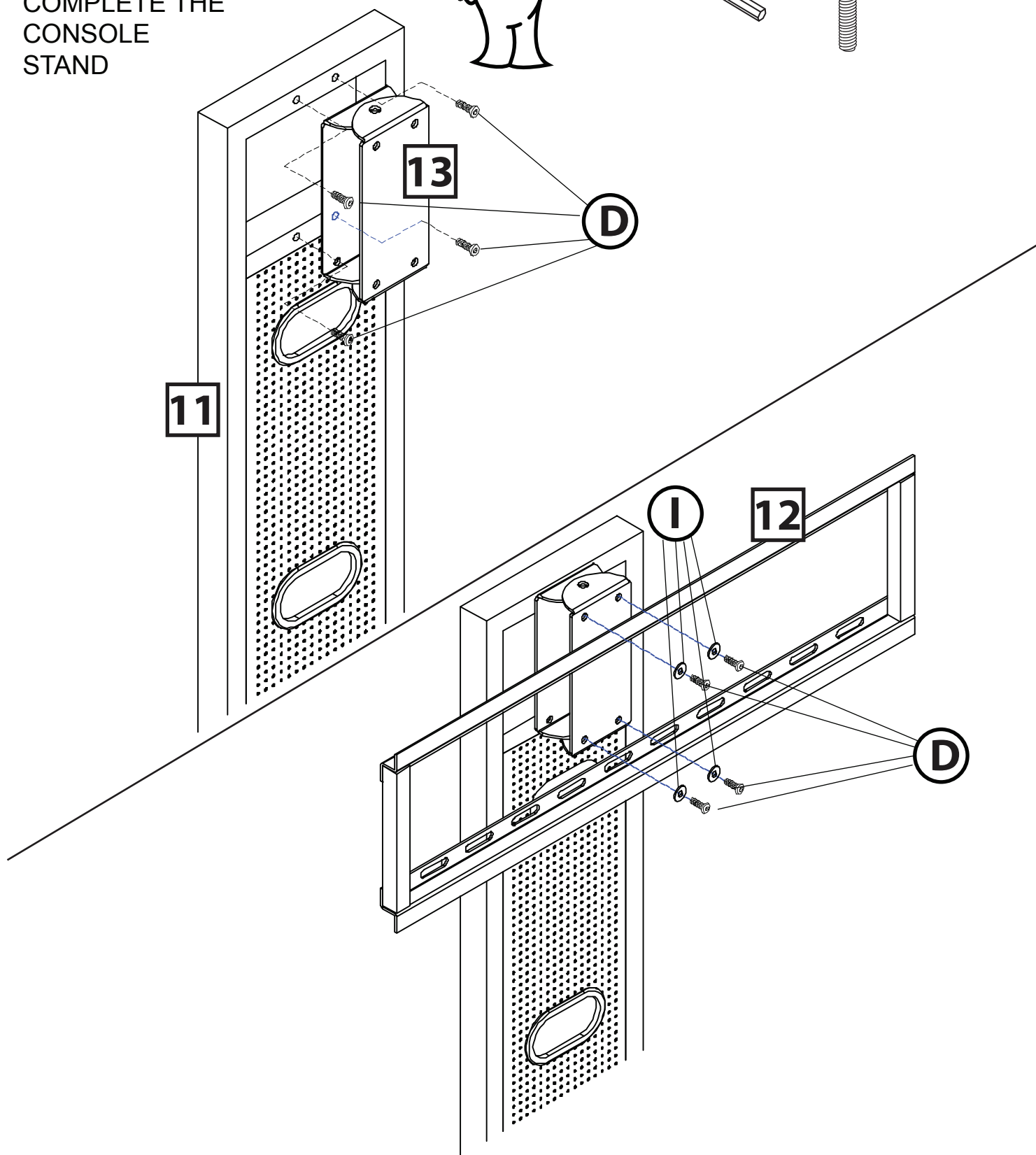
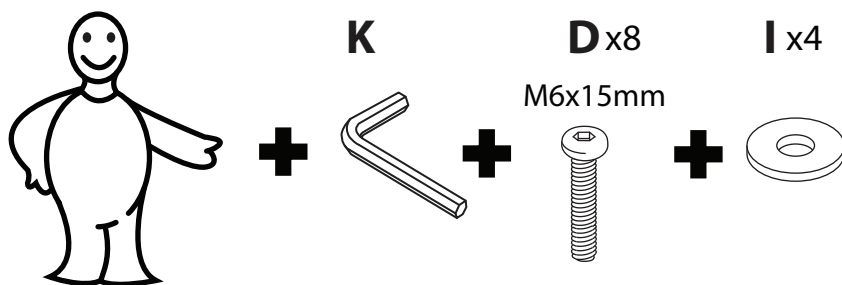


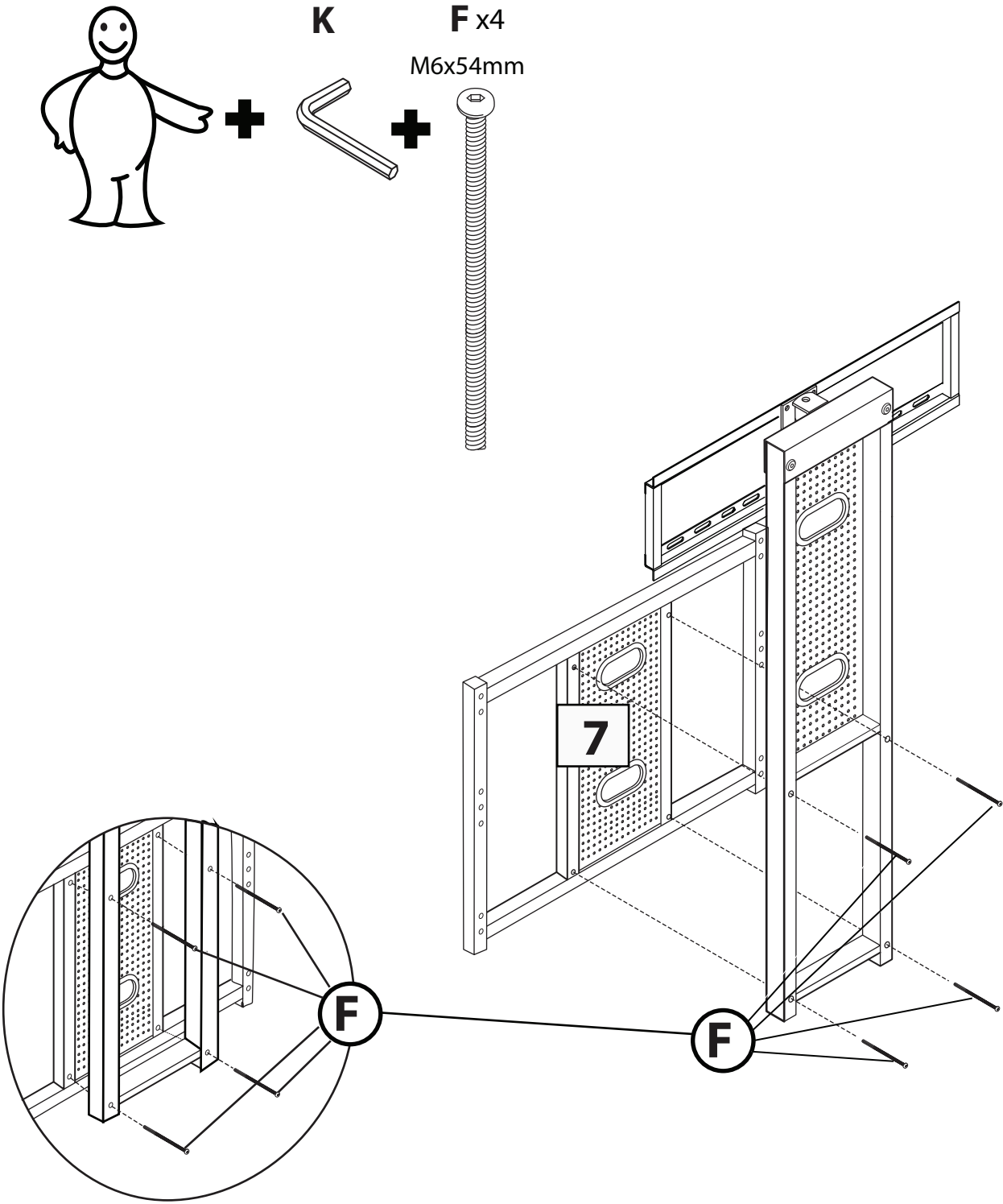




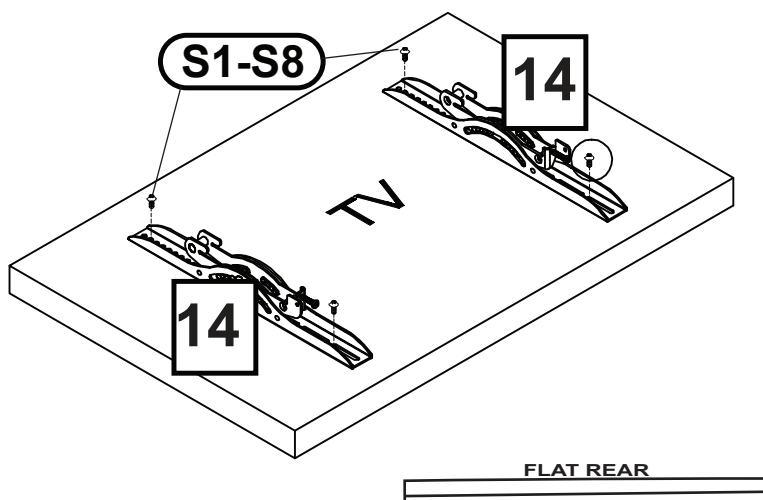
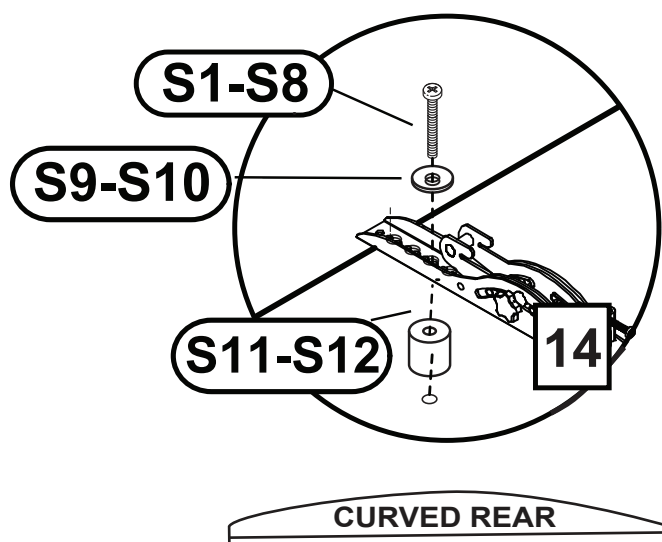
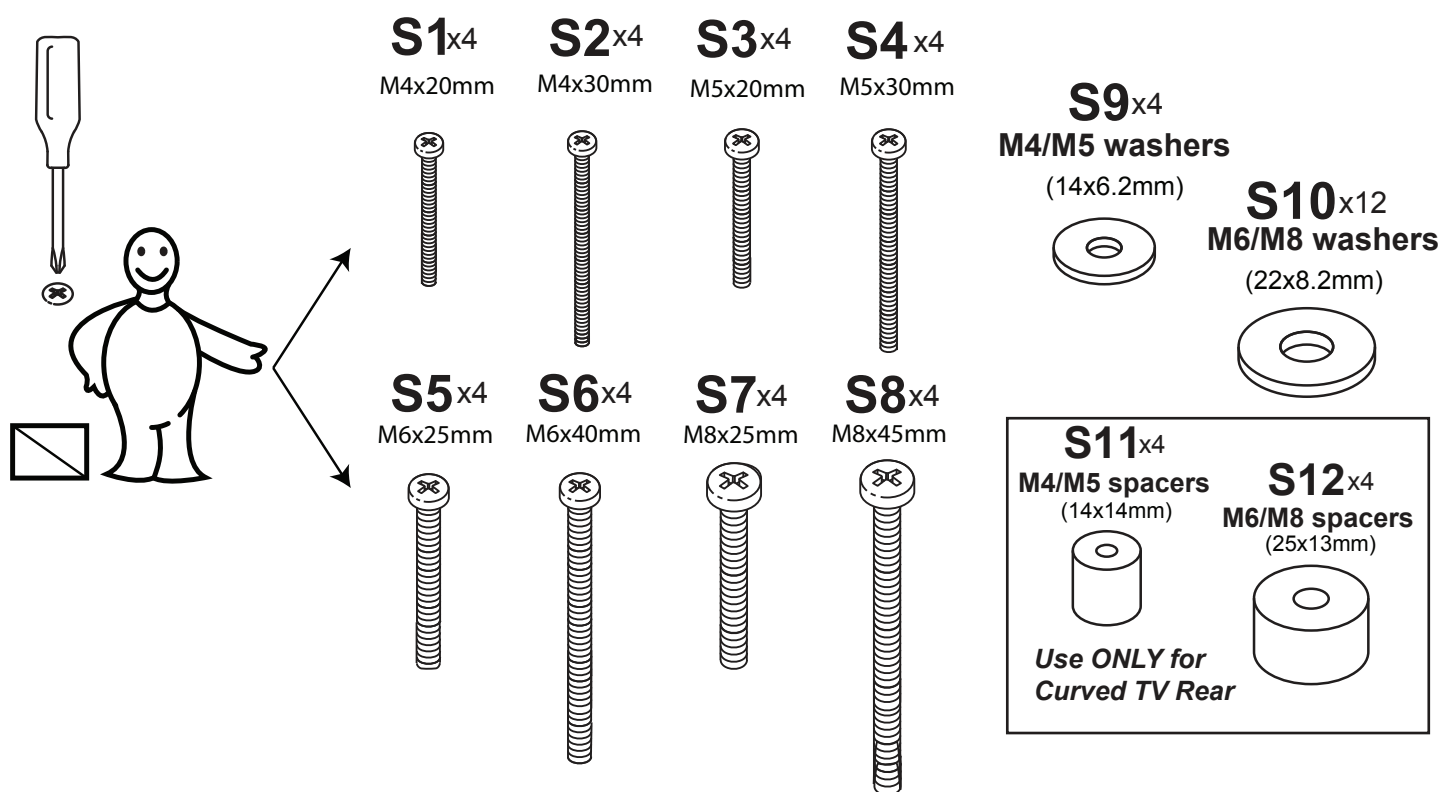
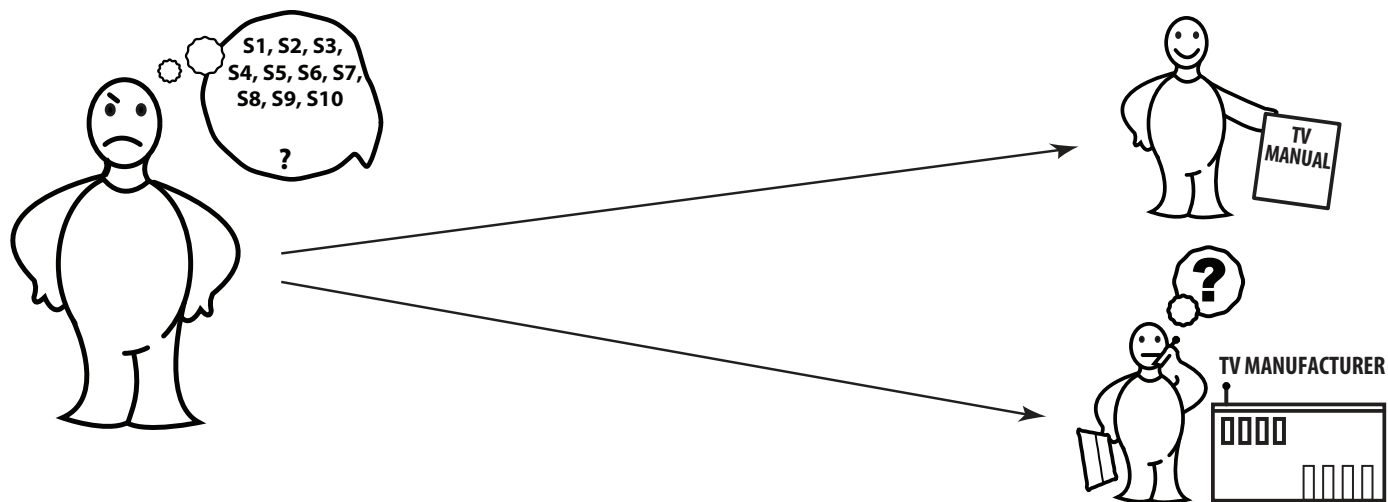
STEP 6

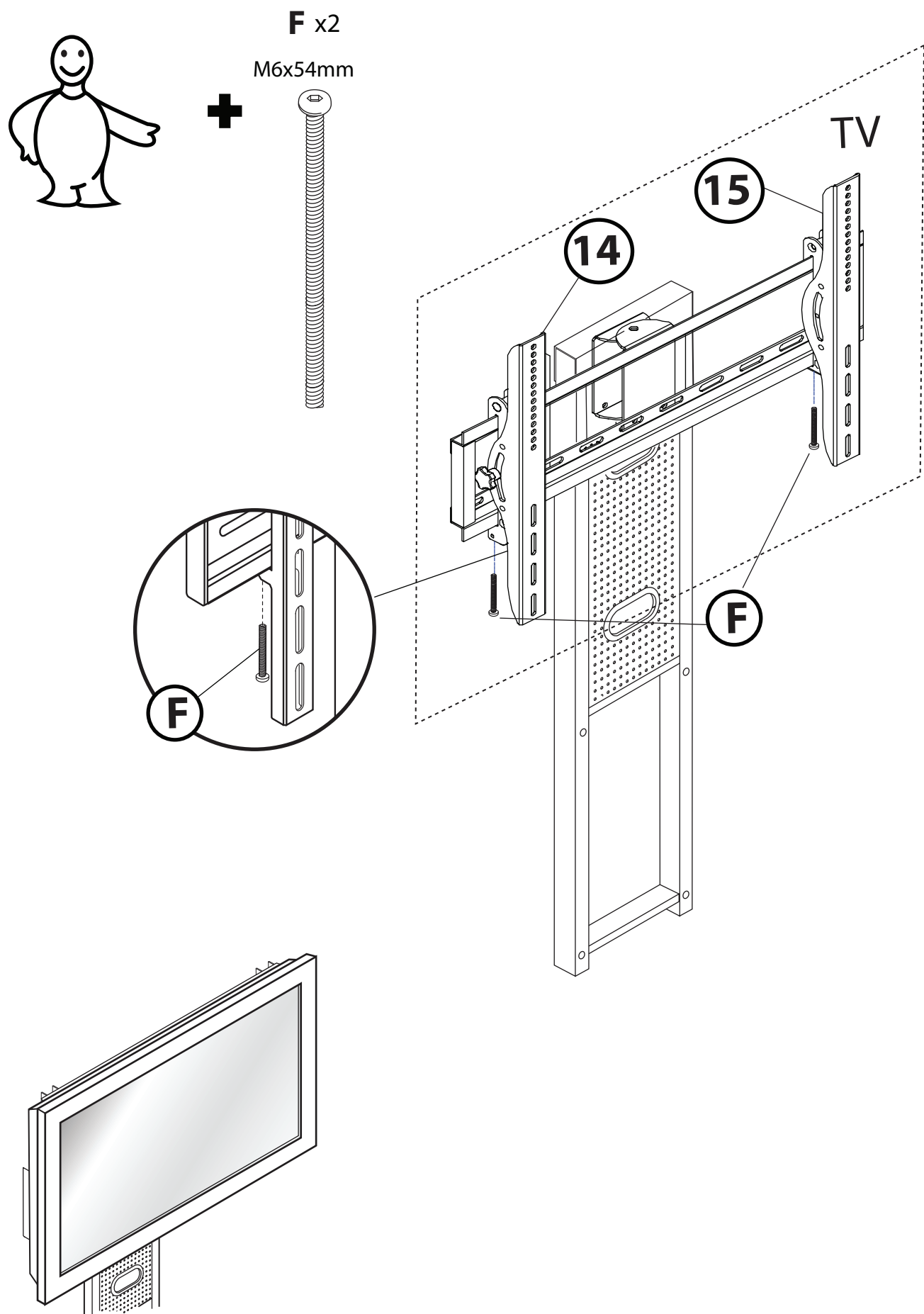
IF USING THIS STAND AS
A CONSOLE, SKIP TO
PAGE 16 AND INSTALL THE
3 GLASS SHELVES TO
COMPLETE THE
CONSOLE
STAND

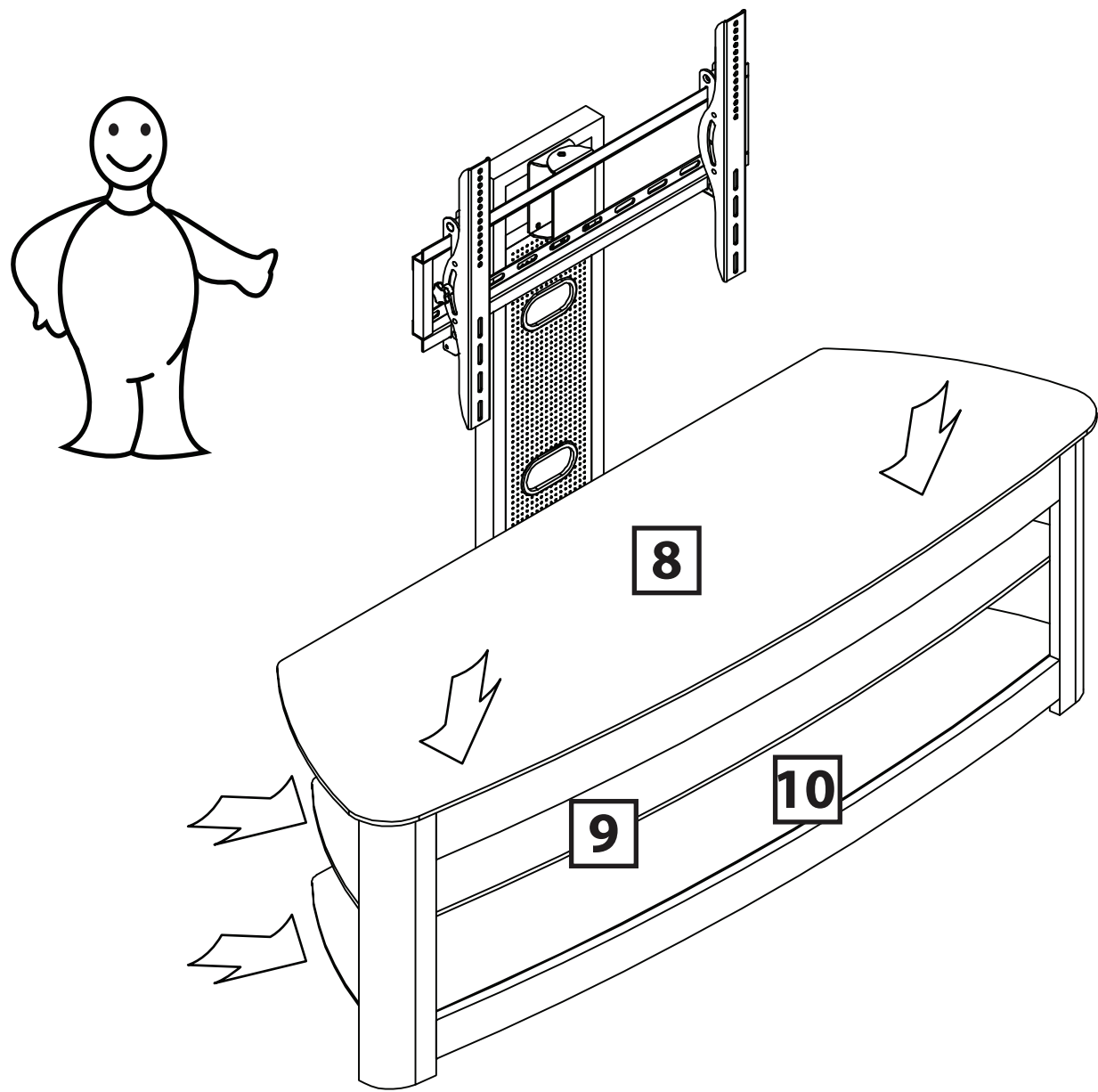




STEP 8







IF ATTACHING THE WALL MOUNT DIRECTLY TO YOUR WALL, FOLLOW THE DIRECTIONS ON PAGES 17, 18, & 19.

Attach the wall mount to the wall

After determining the ideal height on the wall for your television, follow the mounting instructions for your type of wall construction: wood stud or concrete walls.



Attaching this mount to wood studs or concrete walls requires special tools and hardware to ensure the mount is securely and safely attached to these materials. Concrete will break or crumble if special masonry drill bits and drill operating speeds are not properly used. Consult a professional if you are unsure or have any doubts about the safety of the installation. Personal injury or equipment damage can result if the mount is not properly installed.

Wood stud walls (Fig 3a)

1. Use a pencil, awl, or a nail to mark the location of the wall stud centers (Fig 3a) after locating the stud with an electronic stud locator. The distance between marks should not be less than 16 inches (Studs must not be less than 16 inches (40.6 cm)).
2. Place the wall mount flat against the wall with the center of the mount in the desired location, aligning the holes in the mount with the studs (Fig 3b). Use the wall plate as a template to mark the location of the four mounting holes on the wall. Make sure that the mounting holes are level and are parallel.
3. Use 3/16" (5mm) drill bit to pre-drill holes at least 2.5" inches (65mm) deep at the marked locations.
4. Use a wrench, the four long bolts (A), and washers (C) to attach the wall mount to the wall. Do not use wall anchors in wood stud walls.
5. Use the magnet level placed on the front of the mounting plate to level the wall mount, repositioning as necessary, then firmly tighten the bolts. Do not overtighten.

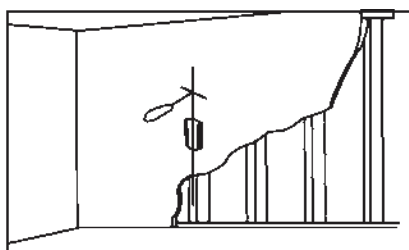


Fig. 3a

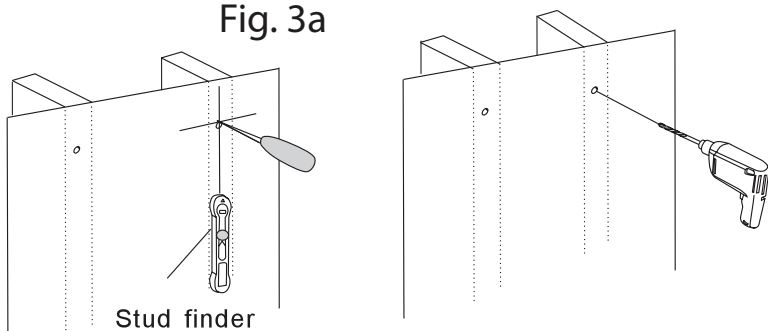
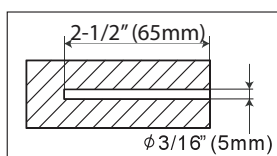


Fig. 3b

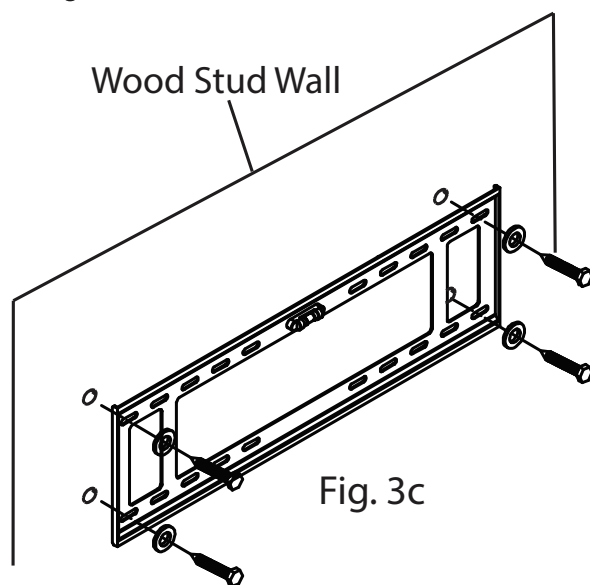


Fig. 3c

Concrete Walls:

1. Place the wall mount flat against the wall in the desired location. Use the wall plate as a template to mark the location of the four mounting holes on the wall. Make sure that the mounting holes are level and parallel. Make sure the horizontal holes are no closer than 16".
2. Use 3/8" (10mm) drill bit to pre-drill four holes at least 2.5" inches (65mm) deep (Fig 3d) at the marked locations.
3. Insert a wall anchor (B) into each pre-drilled hole and lightly tap it with a hammer until the wall anchor is flush with the wall.
4. Use a wrench, the four long bolts (A) and washers (C) to attach the wall mount to the wall with the wall anchors (Fig. 3e).
5. Use the magnet level placed on the front of the mounting plate to level the wall mount, repositioning as necessary, then securely tighten the bolts.

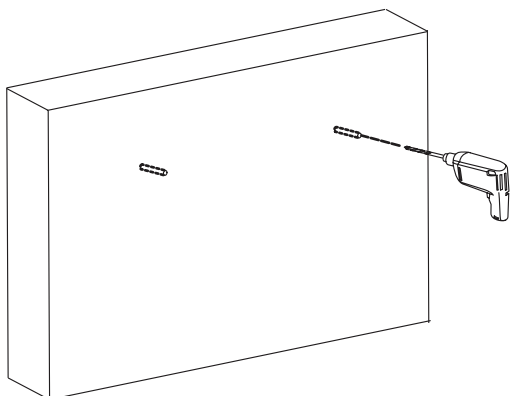


Fig. 3c

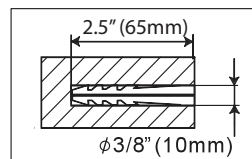


Fig. 3d

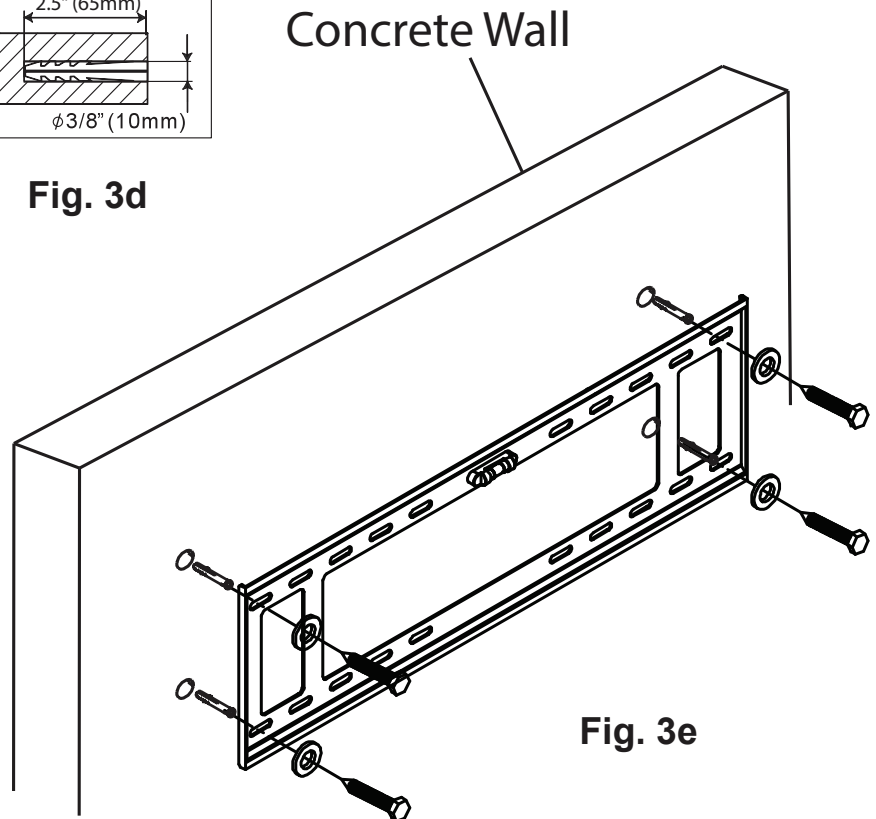


Fig. 3e

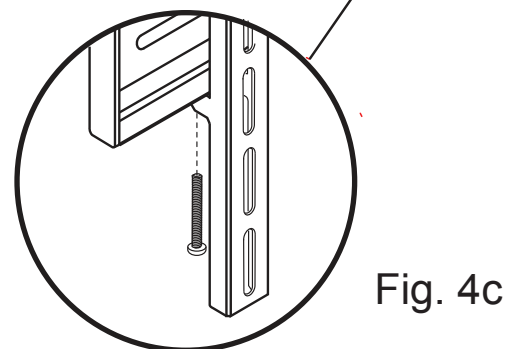
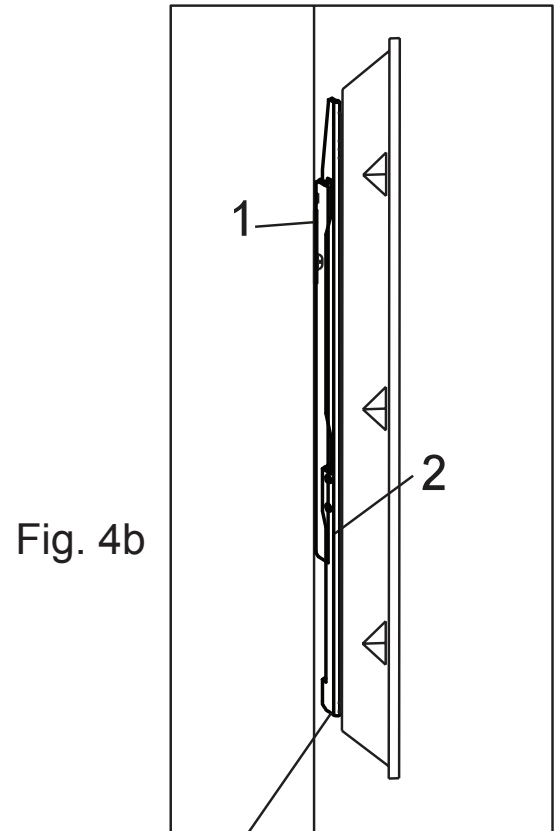
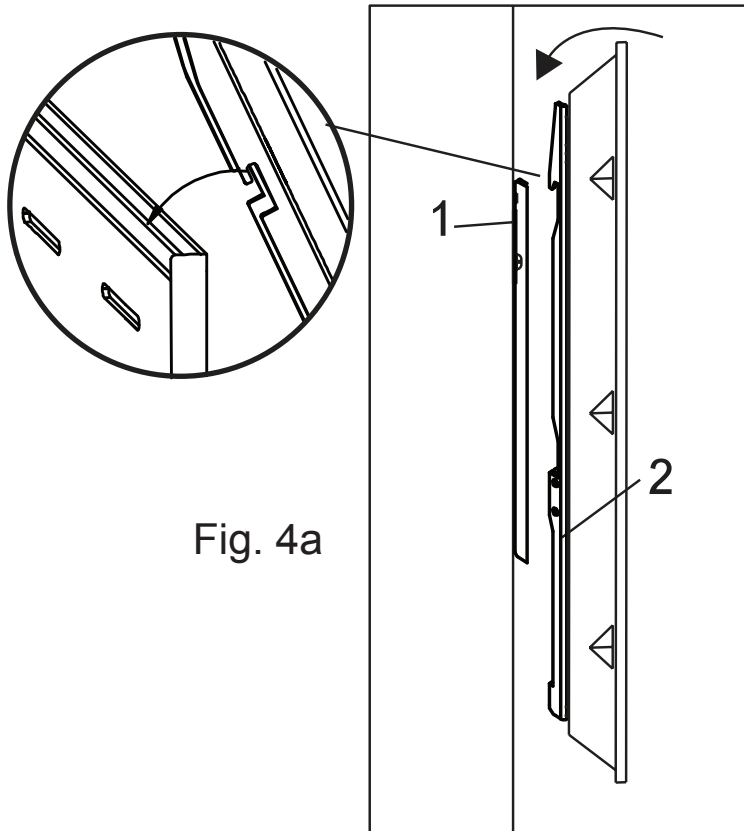
Step 4: Hang the television display



A large television requires two people to lift. Schoenfeld International Inc. and ETEC are not responsible for equipment damage or personal injury due to mishandling.

Do not release the TV until you are sure that it is securely mounted. Releasing the TV without first ensuring that it is securely installed can result in equipment damage or personal injury.

1. Lift the television display with the brackets securely attached up to the wall plate (Fig. 4a).
2. Hook the top of brackets (2) onto the top flange of the wall plate (Fig. 4b), then swing the screen carefully down.
3. As the TV swings down and the lower part of the brackets come in contact with the wall mount plate, secure each bracket to the Mount plate by pulling down on the attached ribbon (one bracket at a time) to open the spring-loaded lock (Fig. 4c). Release each ribbon to close and secure the lock mechanism. Test each lock by pulling gently upward from the bottom of the TV. If the lock is secure the TV will not pull upward.



Remove the TV from the Wall plate

To remove the TV from the Wall plate pull down on each ribbon to release the security lock and gently pull the bottom of the TV away from the wall, then lift the TV off the top of the Wall plate.



A large television requires two people to lift. Schoenfeld International Inc. and ETEC are not responsible for equipment damage or personal injury due to mishandling.

Schoenfeld International Inc and ETEC
5001 American Boulevard West
Suite 275
Bloomington, Minnesota 55437

©Schoenfeld International Inc., 2018
E6032S Ver. 1.0 January 2018